

# Arquitectura Viva

An aerial, high-angle photograph of a vast, open public square filled with a dense crowd of people. The people are scattered across the light-colored pavement, some standing in small groups, some walking, and some sitting on the ground. The crowd is diverse in age and appearance, creating a vibrant, multi-colored mosaic of human activity. The perspective is from directly above, looking down on the scene.

207.9/2018

Dos exposiciones: Lina Bo Bardi, Junya Ishigami · Vicente Verdú in memoriam  
Harquitectes, López Coteló, Esteve en DOSSIER: PATRIMONIO INDUSTRIAL

## Más ciudad

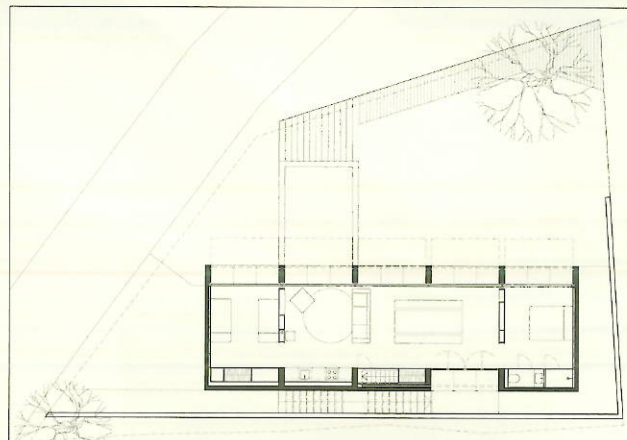
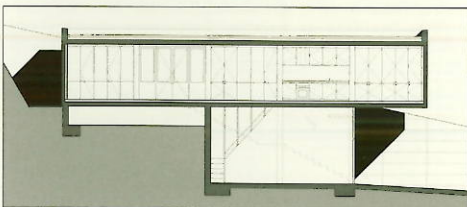
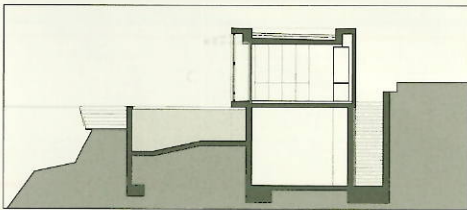
Futuros urbanos, futuros humanos

# Casas Houses



## Casa Retina House by Arnau estudi

Situada extramuros de la localidad gerundense de Santa Pau, la Casa Retina pretende ser, como su nombre sugiere, un refugio familiar para disfrutar de las vistas sobre el paisaje. La relación con el entorno —experimentada por el usuario como una relación visual— es fruto de la manipulación de la abrupta topografía del terreno para configurar un riguroso plano horizontal sobre el que se posa un no menos riguroso volumen prismático que acoge en su interior todas las funciones de la casa: desde el salón de estar hasta la habitación, pasando por el comedor, la cocina, los aseos y las zonas de almacenamiento. Un pesado muro de hormigón —cuya textura semeja una poderosa sillería de piedra— cierra el volumen por todos los lados, salvo por la fachada orientada al paisaje, donde unos grandes porticones de madera pueden abrirse, como si fueran párpados, para funcionar como parasoles, o bien pueden cerrarse para hacer de la casa una evocadora cápsula geométrica posada en el paisaje natural.



LOCATED OUTSIDE the walls of Santa Pau, a village and municipality in the Catalan province of Girona, in eastern Spain, the Retina House is a family refuge that offers magnificent views, as its very optical name suggests. A place for the enjoyment of nature and simple things. Its relationship with the surroundings – which is experienced by the residents as a visual relationship – is the result of manipulating the abrupt topography of the site to form a rigorous horizontal plane on which is posed a no less rigorous prismatic volume containing within it all of the domestic functions, from the living room area to the bedroom by way of the dining room, the kitchen, the bathrooms, and the storage areas. A heavy concrete wall that resembles a powerful stone ashlar in its texture serves to seal the volume on all sides except the one that looks toward the landscape, where large wooden doors can sometimes be opened like eyelids to serve as parasols, and at other times closed to turn the dwelling into a poetic geometrical capsule set amid the natural landscape.

