



[ArchDaily](#) > [Projects](#) > [Houses](#) > [Spain](#) > [Arnau estudi d'arquitectura](#) > [2018](#) > [Bench House / Arnau estudi d'arquitect](#)

## Bench House / Arnau estudi d'arquitectura

02:00 - 23 July, 2019 | Curated by Clara Ott



### MORE FROM ARNAU ESTUDI D'ARQUITECTURA »



Retina House / Arnau estudi d'arquitectura

[More from Arnau estudi d'](#)

 Save





## Location

Olot, [Spain](#)

## Category

[Houses](#)

## Lead Architects

Arnau Vergés i Tejero

## Design Team

Arnau Vergés, Jordi Cusidó

## Area

3918.06 ft<sup>2</sup>

## Project Year

2018

## Photographs

[Marc Torra](#)

## Manufacturers

Formigons Coll, Aluminios Barcelona, Fustes Esteba, Simon Material eléctrico



alcolea+tárrago  
arquitectos



Farmhouse Renovation /  
Buero Philipp Moeller



Amareleja Photovoltaic  
Central / Quadrante  
Arquitectura

[More Houses »](#)

## MOST VISITED



The cities with the  
highest cost of living in  
2019

 Save



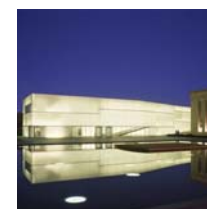


SML Headquarters / Some Place Studio

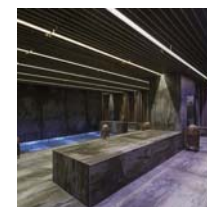
## MOST VISITED PRODUCTS



Independent Workspace -  
MICROOFFICE UNIQ |  
SilentLab



Channel Glass | Bendheim



Non-slip Treatment -  
Dekton® Grip + |  
Cosentino

 Save

## Recommended Products



### 3D Facade Panel

ULMA Architectural Solutions



QUOTE THIS PRODUCT





EGGER

*Text description provided by the architects.* We have been commissioned to build another *white house* in a residential area on the outskirts of a town. The client is a large family consisting of parents, a daughter, two sons and a picture-perfect rabbit.

 Save



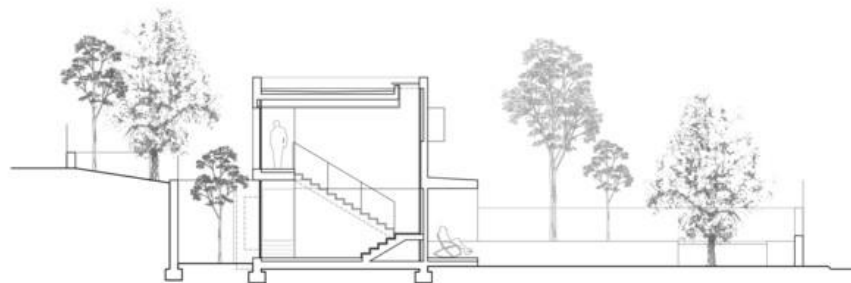


 Save





PLANTA INFERIOR I PLANTA SUPERIOR



SECCIÓ TRANSVERSAL PEL PATI



A simple rectangular prismatic volume contains all the necessary ingredients of a home: the upper ground floor overlooks the family rooms; the lower ground floor brings together the kitchen living

 Save







 Save





The Bench House clings transversally to the slope of the hill that welcomes it, while serenely enjoying the sun and the landscape that it can embrace. Its horizontality is that of someone doing a relaxing stretch; that of pastures and meadows. And that of the convenient bench next to a path, where one sits down and contemplates all that is left to walk.

 Save







[View the complete gallery](#)

 Save





About this office

**Arnau estudi d'arquitectura**

Office

**FOLLOW**

 **Save**





Concrete

See more:

Projects

Built Projects

Selected Projects

Residential Architecture

Houses

Olot

Spain

Cite: "Bench House / Arnau estudi d'arquitectura" [Casa Banco / Arnau estudi d'arquitectura] 23 Jul 2019.  
ArchDaily. Accessed 18 Sep 2019. <<https://www.archdaily.com/921518/bench-house-arnau-estudi-darquitectura/>> ISSN 0719-8884

## BROWSE THE CATALOG



 Save





ShapeShell

Danpal



**Tiles - Oxyd Collection**

Ceramica Rondine



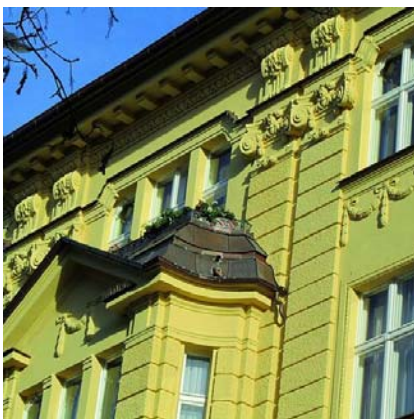
**Outdoor Lights - Empty**

Vibia



**DesignRail® Aluminum Railing Systems with Glass Infill**

Feeney



**TiO2-free Mineral Paint -**

Saldalit® Auto



**Umbrella XXL - Type T**

MDT toy



**Independent Workspace -**

MICROOFFICE UNIO

Save





 Save

