

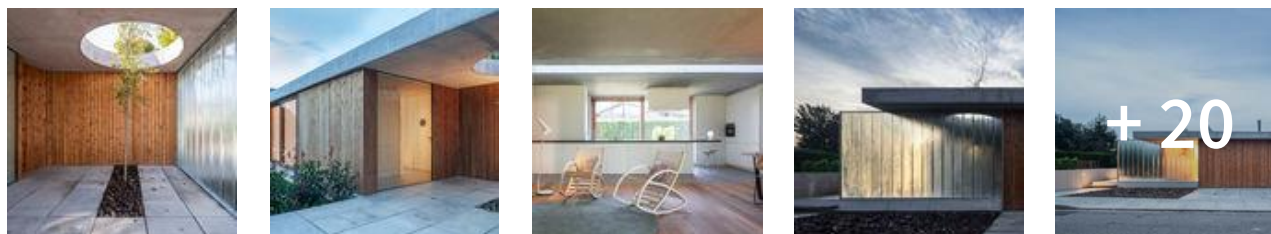
ArchDaily > Projects > Houses > Spain > Arnau estudi d'arquitectura > 2018 > The Park House / Arnau estudi d'

The Park House / Arnau estudi d'arquitectura

16:00 - 22 July, 2019 | Curated by Clara Ott | Translated by [María Francisca González](#)

Save this project

Share Tweet Save



MORE FROM ARNAU ESTUDI D'ARQUITECTURA

»



A Door to the Landscape / Arnau estudi d'arquitectura



Another House of the Neighbourhood / Arnau Estudi d'Arquitectura

[More from Arnau estudi d'arquitectura »](#)

MORE HOUSES



Alam Sutra Residence / Wahana Architects

Location : [Boscdetosca, Spain](#)
Category : [Houses](#)
Lead Architect : Arnau Vergés i Tejero
Design Team : Arnau Vergés, Jordi Cusidó
Area : 182.0 m2
Project Year : 2018
Photographs : [Marc Torra](#)
Manufacturers : [Simón](#), Formigons Coll, Fustes Esteba

[MORE SPECS](#)



Recommended Products



Accoya® Cladding, Siding & Facades
 Accoya

[▶ QUOTE THIS PRODUCT](#)



Hankai House / Katsuhiro Miyamoto & Associates



Kurt Brunner / bergmeisterwolf architekten

[More Houses »](#)

MOST VISITED



The cities with the highest cost of living in 2019



Life in Tree House / Soar Design Studio



SML Headquarters / Some Place Studio

MOST VISITED PRODUCTS



Independent Workspace - MICROOFFICE UNIQ |



EGGER



**Eurodekor Melamine Faced
Chipboard**
EGGER

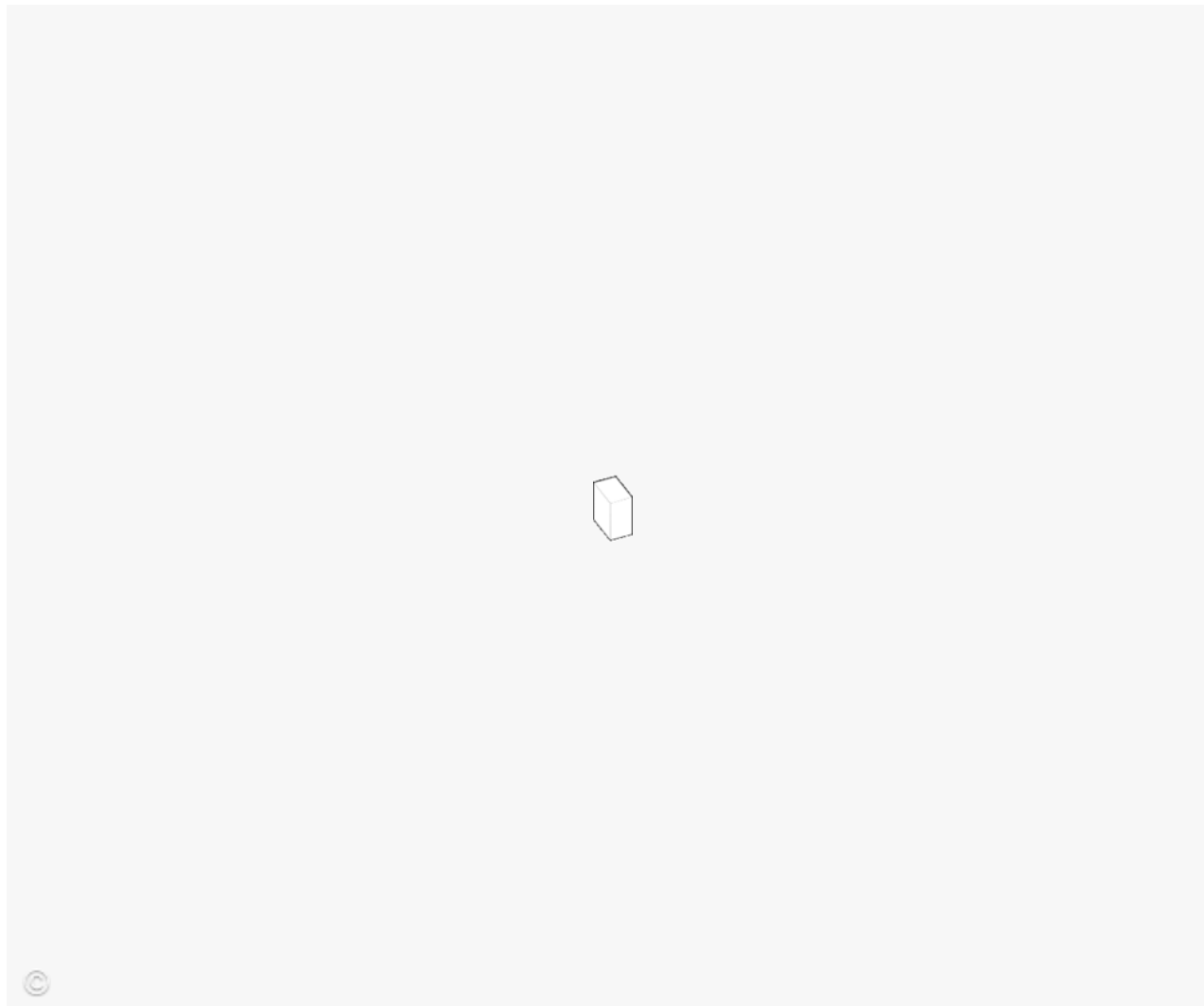
Text description provided by the architects. I remember the first conversation very well: 'I have a plot in that neighborhood, it's right next to the park. I would like to build a simple, discreet house... And practical, very practical'. Maybe she was talking to me about that idealized practicality? The one that we think will lead us to happiness, and then we realize that what we want is to blow the trumpet or climb a very high summit. I am sorry, but what I was really interested in was that park.

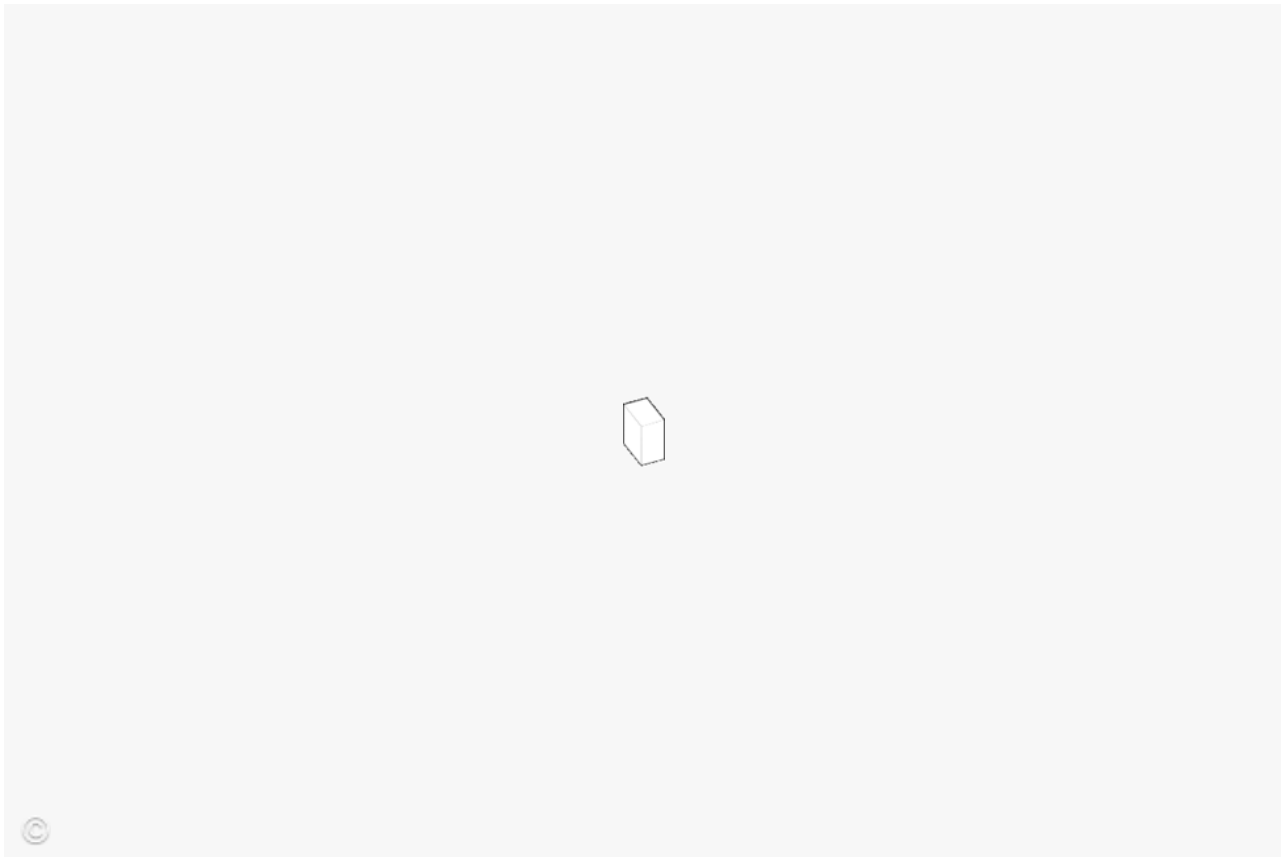
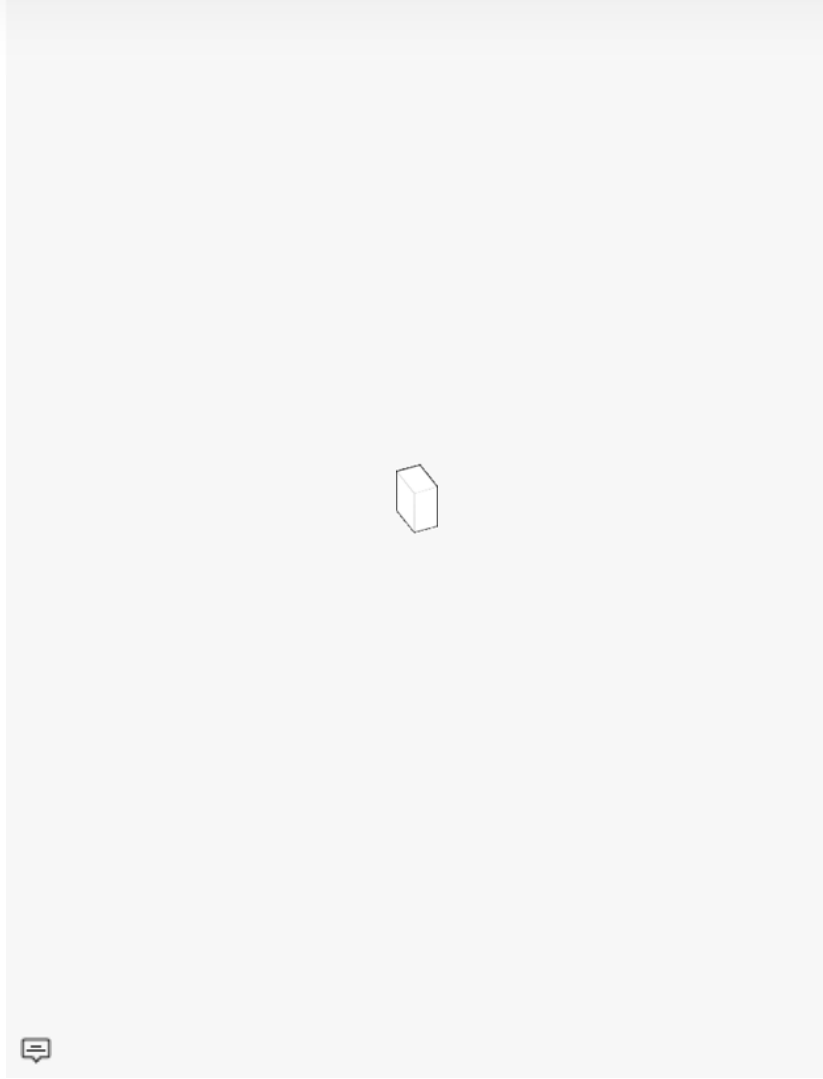


Channel Glass | Bendheim

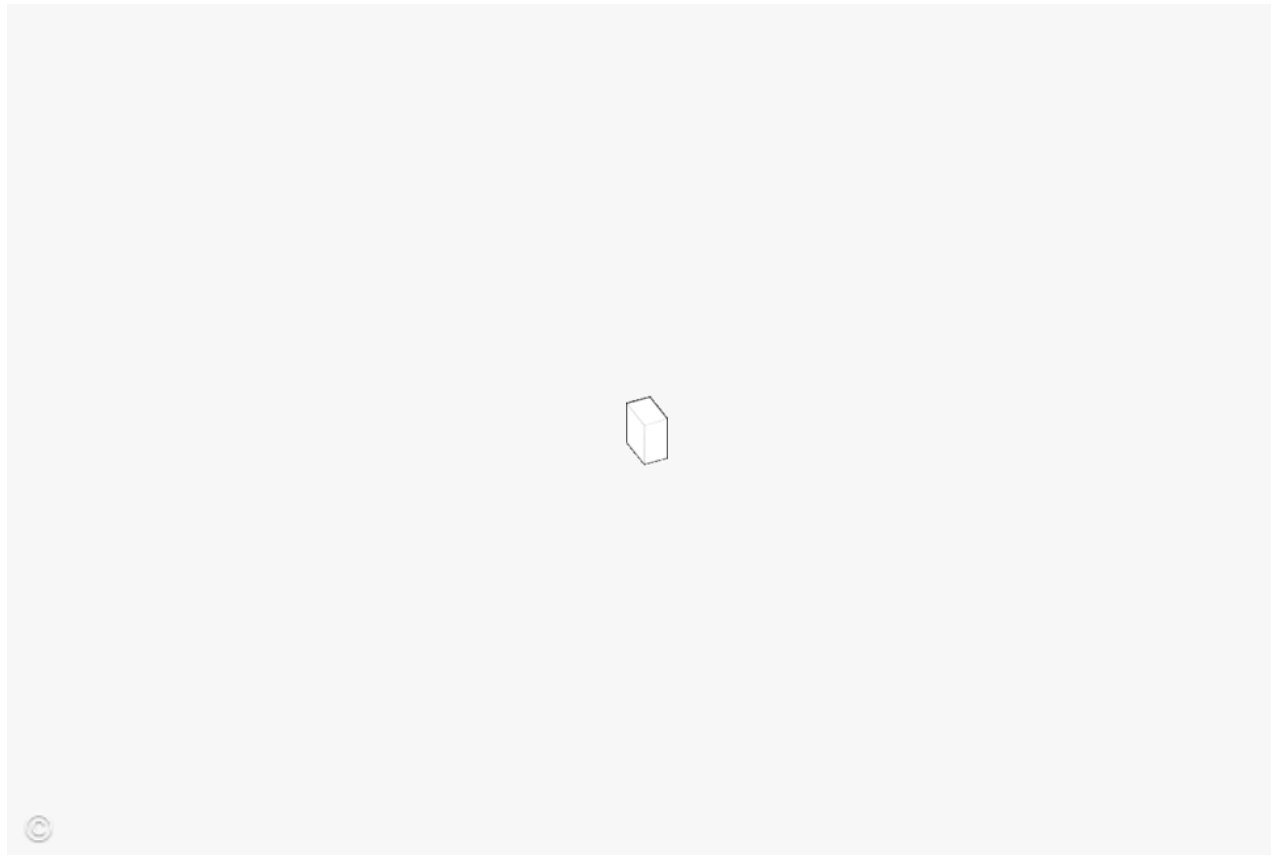


**Non-slip Treatment -
Dekton® Grip + | Cosentino**





Two horizontal planes of concrete define this simple construction that is stretched over a meadow. Between sky and ground, a skin of wooden planks stoically resists being pressed by the bulk of both, while enveloping everything that is necessary to be practically happy.





Projects

News & Topics

Products

BIM

Interviews

Competitions

Events



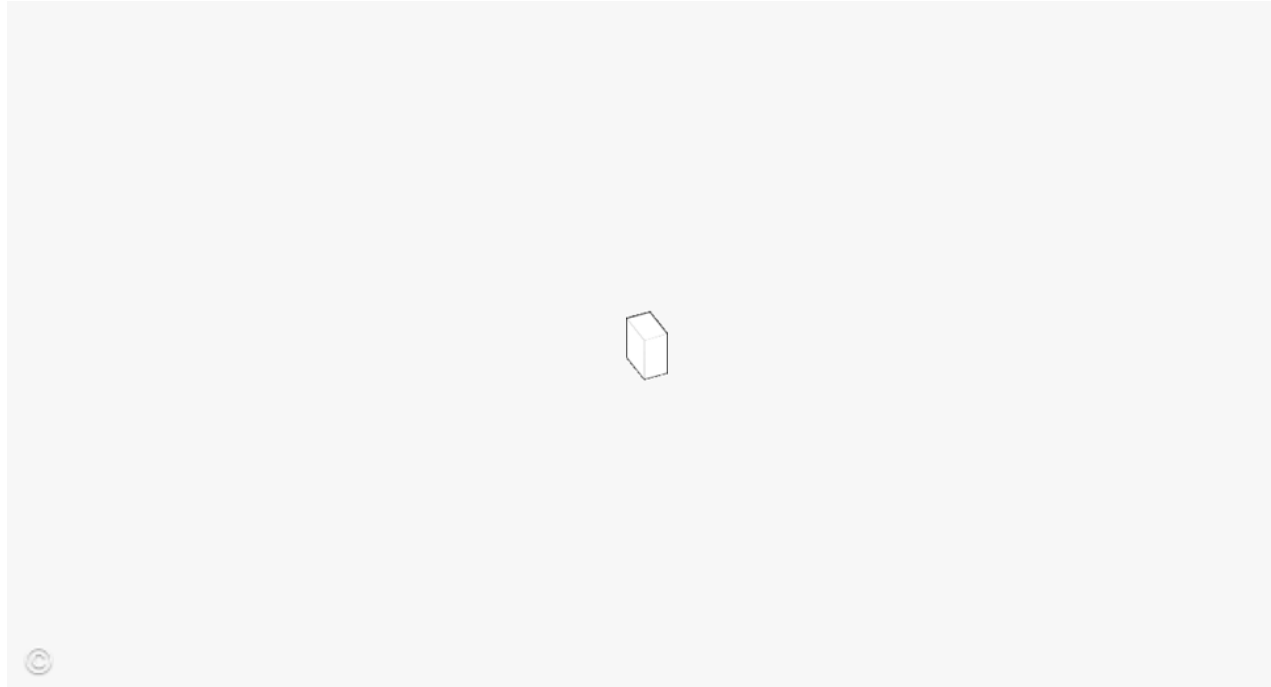
Search



Arnau Vergés Tejero



that the house openly contemplates, it extends beyond the bushes beautifully integrating itself into the park. To the north, there is an orchard both charming and ephemeral, which reminds us of how generous the land is. And, in the street, concealed by the opal glass, a maple-tree, boastful of its beauty, invites us to whisper to ourselves that nothing is what it seems.



[View the complete gallery](#)



 Save this project

 Share  Tweet  Save

About this office

Arnau estudi d'arquitectura

Office

FOLLOW

Wood

See more:

- [Projects](#)
- [Built Projects](#)
- [Selected Projects](#)
- [Residential Architecture](#)
- [Houses](#)
- [Boscdetosca](#)
- [Spain](#)

Cite: "The Park House / Arnau estudi d'arquitectura" [La casa del parque / Arnau estudi d'arquitectura] 22 Jul 2019. ArchDaily. (Trans. María Francisca González) Accessed 18 Sep 2019.
<<https://www.archdaily.com/921505/the-park-house-arnau-estudi-darquitectura/>> ISSN 0719-8884



Advanced Composites at the Victorian Comprehensive
ShapeShell

Roofing System Danpal® - lighting
Danpal

Decking - Block Tek
Parklex International S.L.

Tiles - Oxyd Collection
Ceramica Rondine

Outdoor Lights - Empty
Vibia

DesignRail® Aluminum Railing Systems with Glass
Feeney

TiO2-free Mineral Paint - Soldalit®-Arte
KEIM

Umbrella XXL - Type T
MDT-tex

Independent Workspace - MICROOFFICE UNIQ
SilentLab

[More products »](#)

