

Project Authors

Arnau Estudi d'Arquitectura
Principal Architect

Arnau Vergés Tejero
Founder



It is an undetermined space in an old hospital building; we have a commission to design a new tourist office for the town. We start by searching for the space. We do it bearing in mind the values of the town and its surroundings – landscape, history, culture, identity – that we want to transmit, but also the involvement in the town's storyline: we understand that a public building is at the same time a public space. The chosen space is the storage rooms and chambers of the old

read more

Project details

Year 2015

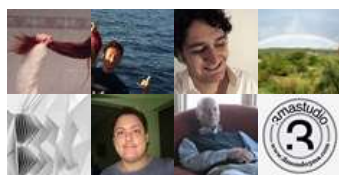
Work finished in 2015

Status Completed works

Type Multi-purpose
Cultural Centres /
Tourist Facilities /
Building Recovery
and Renewal



Lovers 55 users >



A door to the landscape - Olot Tourist Office

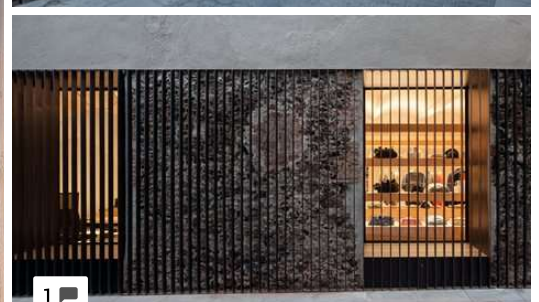
Una porta al paisatge - Oficina de Turismo Olot

Olot / Spain / 2015

love 55 Love 3,358 Visits PUBLISHED 12/1/2015

Share 40 Pinterest 80 +

Images Info Love Comments 1



Comments 1

Post your comment here



Ferrer Xocolata

La Braseras's Terrace



Espai vertical

Farm Surroundings



Comments 1



Post your comment here