



[Want to see the coolest refurbishment projects? Click here.](#)



ArchDaily > Projects > Houses > Spain > Arnau estudi d'arquitectura > 2017 > Retina House / Arnau estudi d'arquitectur

Retina House / Arnau estudi d'arquitectura

09:00 - 30 May, 2018

M MAYA LT™ 2018
 25% de descuento en una suscripción de Maya LT
 AHORRE AHORA >
 AUTODESK



RECOMMENDED FOR YOU



Tess + JJ's House / po-co Architecture



Island House / IROJE KHM Architects



Residence in Colares / Frederico Valsassina Arquitectos



Minimal Frame Window - PH38 - Flexibility | PanoramAH!

Architects	: Arnau estudi d'arquitectura
Location	: Santa Pau, Spain
Author Architect	: Arnau Vergés Tejero
Project Year	: 2017
Photographs	: Marc Torra , Pep Sau

[MORE SPECS](#)

MORE HOUSES



Nakanosawa Project / Ryo Yamada



Ittka House / Fabian Tan Architect

By using ArchDaily, you agree to our [Terms of Use](#), [Privacy Policy](#) and [Cookie Policy](#).

I ACCEPT

If you want to make the best of your experience on our site, [sign-up](#).



Thin wood cladding - Skin

Parklex International S.L.

[QUOTE THIS PRODUCT](#)

MOST VISITED



74 Exceptional Architecture Portfolios



Slabs - Concrete

Apavisa



Plaza Artz Pedregal Building by Sordo Madaleno Arquitectos Collapses in Mexico City



Acoustic Panels - Natural Wood

Troldtekt



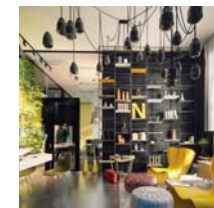
Europe's Tallest Skyscraper Approaches Completion in St Petersburg



MOST VISITED PRODUCTS



Perforated Metal Screens | Diamond Metal Screens



Renders - Features and Effects | Lumion



Ductal® Cladding Panels (EU) | Ductal®

Text description provided by the architects. An old red Massey Ferguson like Grandpa Joan's still works the land. In this fast-paced world, there are still ancient landscapes where the fumes of the neighbouring houses are important and accompany you in winter; corners of happiness where orchards outside the walls and on the banks of the river are nicely kept. This is the story of a family refuge where one can enjoy nature and simple things; of a time machine that wants to keep this precious landscape forever unchanged.



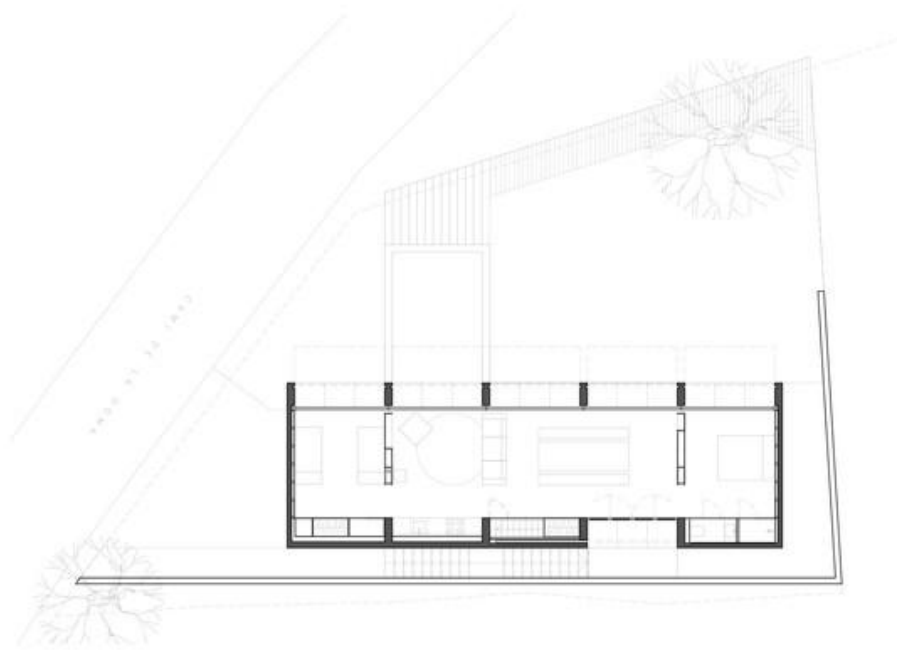
[About](#)

[Contact](#)

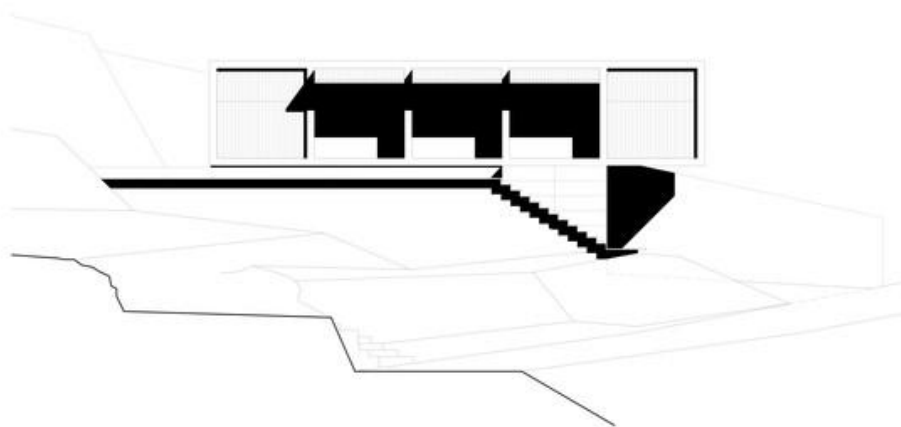
[Submit](#)

[Advertise](#)

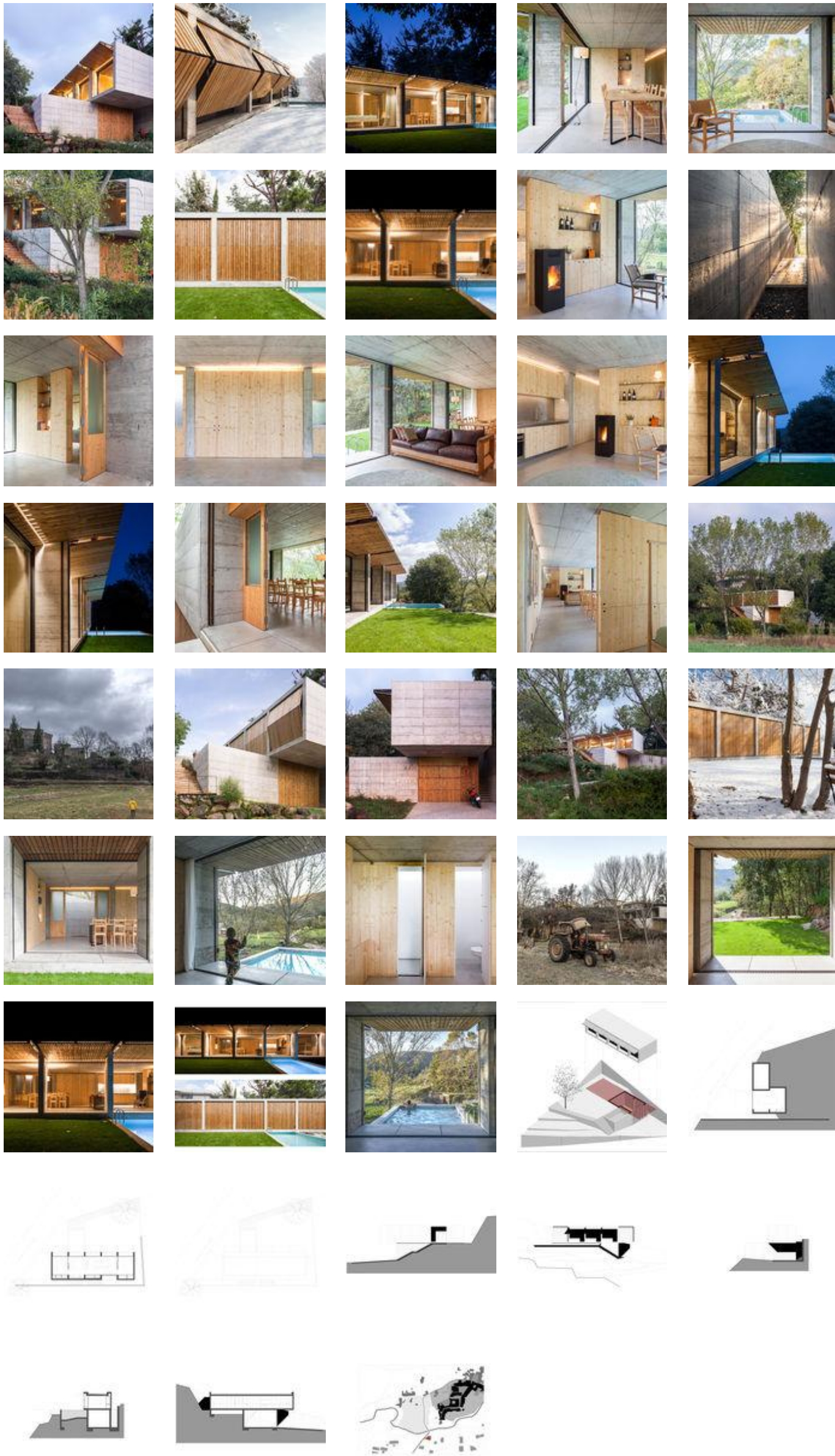
In this project, a meadow was constructed as an adaptation to the topography of the terrain. Elements, such as the garage, the water basin, the walkway or the sloping wall in the background that follows and cuts the steep slope, form a flat surface. And on its top, there rests an autonomous rectangular volume that houses the minimum functions of a dwelling in a single open-plan space; to the south, there is a living, dining and resting room; and within the thick wall that isolates us from the north, there are toilets and the entrance.



This architectural object transforms its relationship with the environment as the seasons change in the riverbank vegetation filter that accompanies it, but also from the varying expression of its gaze, which enjoys the landscape protected from the sun when it raises its eyelids. And, fearful of the brevity of this sober beauty, the refuge rests unstable on a hillside ledge like an owl ready to take flight with the landscape caught on its retina.



[View the complete gallery](#)



About this office

Arnau estudi d'arquitectura
Office

FOLLOW

Products:

Wood

Concrete

See more:

Projects

Built Projects

Selected Projects

Residential Architecture

Houses

Santa Pau

Spain

Cite: "Retina House / Arnau estudi d'arquitectura" [Casa Retina / Arnau estudi d'arquitectura] 30 May 2018. ArchDaily. Accessed 13 Jul 2018. <<https://www.archdaily.com/895172/retina-house-arnau-estudi-darquitectura/>> ISSN 0719-8884

BROWSE THE CATALOG



Interior Solutions - lighting
Danpal



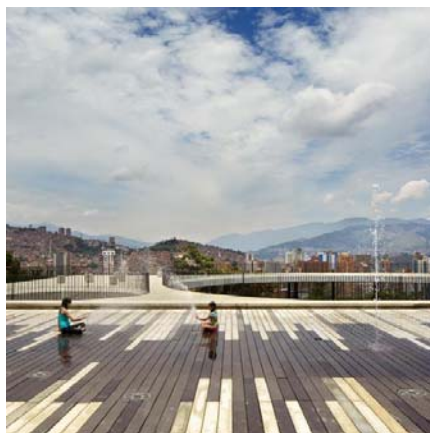
ShapeShell FreeForm at RMIT University
ShapeShell



Architectural Wire Meshes - MONTANA 1961
HAVER & BOECKER



Coils For Roofing - Orofe
Elval Colour



NovaDeck
Lamitech



Metal Composites - Natural Metals
ALPOLIC